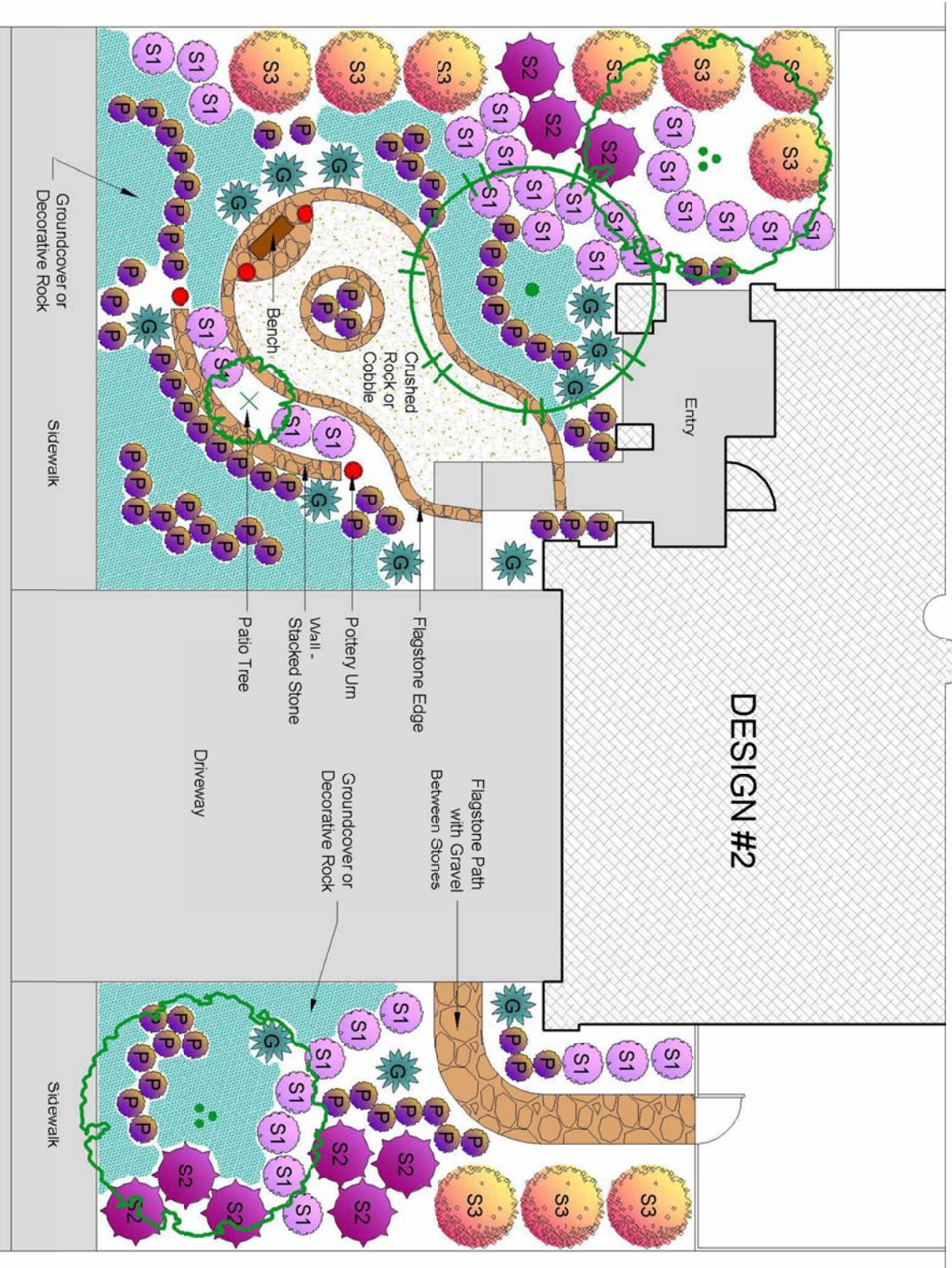


Design #2



Elsinore Valley Municipal Water District

California Native and Drought Tolerant Plants for the Garden

Design #2

Trees—Small to Medium Evergreen

| | |
|---------------------------|-------------------|
| Geijera parviflora | Australian Willow |
| Olea europaea 'Fruitless' | Fruitless Olive |
| Quercus suber | Cork Oak |

Trees—Large Evergreen

| | | |
|-------------------|---------------------|--------|
| Pinus torreyana | Torrey Pine | Native |
| Quercus agrifolia | California Live Oak | Native |

Trees—Small to Medium Deciduous

| | | |
|-------------------------------|--------------------------|--------|
| Aesculus californica | California Buckeye | Native |
| Cercidium floridum | Blue Palo Verde | Native |
| Cercidium 'Desert Museum' | Desert Museum Palo Verde | Native |
| Chilopsis linearis | Desert Willow | Native |
| Parkinsonia aculeata | Mexican Palo Verde | Native |
| Lagerstroemia indica | Crape Myrtle | |
| Robinia ambigua 'Purple Robe' | Idaho Locust | |
| Vitex agnus-castus | Chaste Tree | |

Trees—Small Space Patio

| | | |
|--------------------------------|-----------------|--------|
| Cercis occidentalis | Western Redbud | Native |
| Rhaphiolepis 'Majestic Beauty' | India Hawthorne | |
| Rosa 'Iceberg' | Iceberg Rose | |

(S-1) Shrubs—3 feet high or less

| | | |
|----------------------------------|------------------------------|--------|
| Arctostaphylos 'Sunset' | Manzanita | Native |
| Artemisia californica 'Montara' | Montara California Sagebrush | Native |
| Calliandra eriophylla | Fairy Duster | Native |
| Ceanothus thysiflorus 'Skylark' | Blue Mountain Lilac | Native |
| Diplacus aurantiacus hybrids | Bush Monkey Flower | Native |
| Galvezia speciosa | Island Snapdragon | Native |
| Mahonia repens | Creeping Mahonia | Native |
| Trichostema lanatum | Wooly Blue Curls | Native |
| | | |
| Cistus 'Sunset' | Rockrose | |
| Convolvulus cneorum | Bush Morning Glory | |
| Convolvulus mauritanicus | Ground Morning Glory | |
| Lavandula species | Lavender | |
| Salvia chamaedryoides | Blue Sage | |
| Teucrium chamaedrys | Germander | |
| Tulbaghia violacea 'Silver Lace' | Variegated Society Garlic | |

(S-2) Shrubs—3 to 5 feet high

| | | |
|---------------------------------------|------------------------------|--------|
| Carpenteria californica | Bush Anemone | Native |
| Eriogonum crocatum | Saffron Buckwheat | Native |
| Isomeris arborea | Bladderpod | Native |
| Mahonia aquifolium 'Golden Abundance' | Oregon Grape | Native |
| Rhamnus californica 'Eve Case' | Coffeeberry | Native |
| Ribes indecorum | White Flowering Currant | Native |
| Ribes sanguineum | Pink Winter Currant | Native |
| Ribes speciosum | Fuchsia Flowering Gooseberry | Native |
| Salvia clevelandii 'Allen Chickering' | Cleveland Sage | Native |
| Salvia clevelandii | Cleveland Sage | Native |
| | | |
| Cistus ladanifer | Crimson-Spot Rockrose | |
| Cistus purpureus | Orchid Rockrose | |
| Rhaphiolepis indica cultivars | India Hawthorne | |
| Salvia leucantha | Mexican Bush Sage | |
| Senna artemesioides | Feathery Cassia | |

(S-3) Shrubs 5 feet high or more

| | | |
|---|-------------------------|--------|
| Arctostaphylos densiflora 'Howard McMinn' | Manzanita | Native |
| Caesalpinia gilliesii | Desert Bird of Paradise | Native |
| Ceanothus 'Concha' | Wild Lilac | Native |
| Ceanothus 'Dark Star' | Wild Lilac | Native |
| Ceanothus 'Snow Flurry' | Wild Lilac | Native |
| Ceanothus 'Wheeler Canyon' | Wild Lilac | Native |
| Heteromeles arbutifolia | Toyon | Native |
| Lavatera assurgentiflora | Island Mallow | Native |
| Rhus ovata | Sugar Bush | Native |
| Rhus integrifolia | Lemonade Berry | Native |
| Arbutus unedo 'Compacta' | Dwarf Strawberry Tree | |
| Feijoa sellowiana | Pineapple Guava | |
| Leonotis leonurus | Lion's Tail | |
| Phlomis fruticosa | Jerusalem Sage | |
| Teucrium fruticans | Bush Germander | |
| Leptospermum scoparium 'Ruby Glow' | New Zealand Tea Tree | |
| Leptospermum scoparium 'Snow White' | New Zealand Tea Tree | |

(GC) Ground Covers

| | | |
|---|------------------|--------|
| Arctostaphylos 'Emerald Carpet' | Manzanita | Native |
| Baccharis 'Pigeon Point' or 'Parking Strip' | Coyote Brush | Native |
| Ceanothus 'Yankee Point' | California Lilac | Native |
| Lantana montevidensis cultivars | Lantana | |
| Myoporum parvifolium | Myoporum | |
| Rosmarinus officinalis 'Prostrata' | Dwarf Rosemary | |
| Verbena tenuisecta | Moss Verbena | |

(P) Perennials

| | | |
|---------------------------------------|-----------------------------|--------|
| Asclepias speciosa | Showy Milkweed | Native |
| Heuchera species | Coral Bells | Native |
| Iris douglasiana | Douglas Iris | Native |
| Lupinus sparsiflorus | Coulter's Lupine | Native |
| Penstemon 'Margarita BOP' | Mountain Penstemon | Native |
| Penstemon heterophyllus heterophyllus | Foothill Penstemon | Native |
| Penstemon spectabilis | Royal Penstemon | Native |
| Phacelia campanularia | California Desert Bluebells | Native |
| Sisyrinchium bellum | Blue-Eyed Grass | Native |
| Sisyrinchium californicum | Golden-Eyed Grass | Native |
| Viguiera laciniata | California Sunflower | Native |
| Achillea species | Yarrow | |
| Anigozanthos hybrids | Kangaroo Paw | |
| Artemisia schmidtiana 'Silver Mound' | Angel's Hair | |
| Erigeron karvinskianus | Santa Barbara Daisy | |
| Gaura lindheimeri | Gaura | |
| Limonium perezii | Sea Lavender | |
| Penstemon hartwegii hybrids | Penstemon | |
| Tagetes lemmonii | Mountain Marigold | |

Vines

| | | |
|-------------------------------|----------------------|--------|
| Clematis lasiantha | Chaparral Clematis | Native |
| Lonicera subspicata | Southern Honeysuckle | Native |
| Bougainvillea 'Barbara Karst' | Bougainvillea | |
| Macfadyena unguis-cati | Cat's Claw | |

(G) Grasses

| | | |
|-------------------------------|-----------------------|--------|
| Muhlenbergia rigens | Deer Grass | Native |
| Nassella pulchra | Purple Needle Grass | Native |
| Calamagrostis 'Karl Foerster' | Reed Grass | |
| Helictotrichon sempervirens | Blue Oat Grass | |
| Nassella tenuissima | Mexican Feather Grass | |
| Pennisetum setaceum 'Rubrum' | Red Fountain Grass | |